



Gas6 Polyclonal Antibody

Catalog No	YP-Ab-00410
Isotype	IgG
Reactivity	Human;Rat;Mouse;
Applications	WB;IHC;IF;ELISA
Gene Name	GAS6
Protein Name	Growth arrest-specific protein 6
Immunogen	The antiserum was produced against synthesized peptide derived from human GAS6. AA range:291-340
Specificity	Gas6 Polyclonal Antibody detects endogenous levels of Gas6 protein.
Formulation	Liquid in PBS containing 50% glycerol, 0.5% BSA and 0.02% sodium azide.
Source	Polyclonal, Rabbit,IgG
Purification	The antibody was affinity-purified from rabbit antiserum by affinity-chromatography using epitope-specific immunogen.
Dilution	WB: 1/500 - 1/2000. IHC: 1/100 - 1/300. ELISA: 1/40000.. IF 1:50-200
Concentration	1 mg/ml
Purity	≥90%
Storage Stability	-20°C/1 year
Synonyms	GAS6; AXLLG; Growth arrest-specific protein 6; GAS-6; AXL receptor tyrosine kinase ligand
Observed Band	75kD
Cell Pathway	Secreted .
Tissue Specificity	Plasma. Isoform 1 and isoform 2 are widely expressed, isoform 1 being expressed at higher levels than isoform 2 in most tissues. Isoform 2 is the predominant form in spleen.
Function	function:Ligand for tyrosine-protein kinase receptors AXL, TYRO3 and MER whose signaling is implicated in cell growth and survival, cell adhesion and cell migration. Plays a role in thrombosis by amplifying platelet aggregation and secretion in response to known agonists.,PTM:Gamma-carboxyglutamate residues are formed by vitamin K dependent carboxylation. These residues are essential for the binding of calcium.,PTM:Isoform 1 is proteolytically processed after secretion to yield a N-terminal 36 kDa protein and a C-terminal 50 kDa protein including the laminin G-like domains which activates AXL.,similarity:Contains 1 Gla (gamma-carboxy-glutamate) domain.,similarity:Contains 2 laminin G-like domains.,similarity:Contains 4 EGF-like domains.,subunit:Heterodimer and heterotetramer with AXL.,tissue specificity:Plasma. Isoform 1 and isoform 2 are widely expressed. Isoform 1 is the predominant fo

**Background**

This gene encodes a gamma-carboxyglutamic acid (Gla)-containing protein thought to be involved in the stimulation of cell proliferation. This gene is frequently overexpressed in many cancers and has been implicated as an adverse prognostic marker. Elevated protein levels are additionally associated with a variety of disease states, including venous thromboembolic disease, systemic lupus erythematosus, chronic renal failure, and preeclampsia. [provided by RefSeq, Aug 2014],

matters needing attention

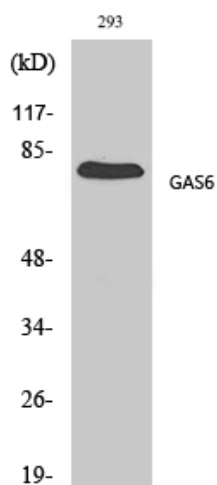
Avoid repeated freezing and thawing!

Usage suggestions

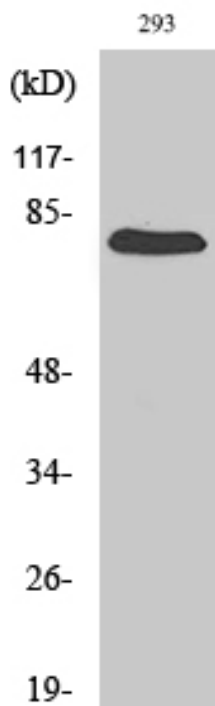
This product can be used in immunological reaction related experiments. For more information, please consult technical personnel.



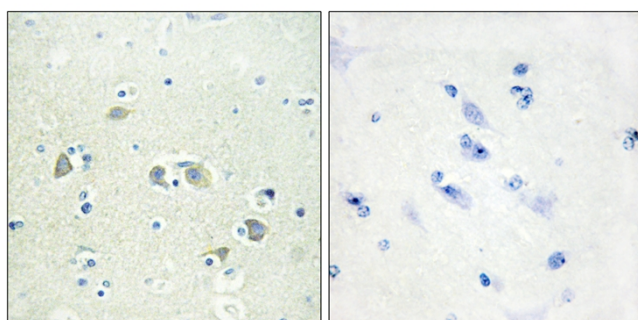
Products Images



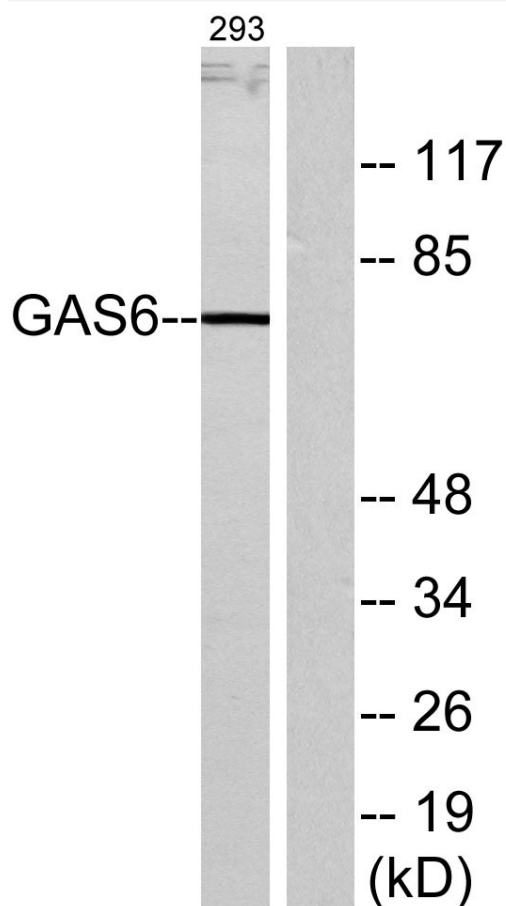
Western Blot analysis of various cells using Gas6 Polyclonal Antibody diluted at 1:500



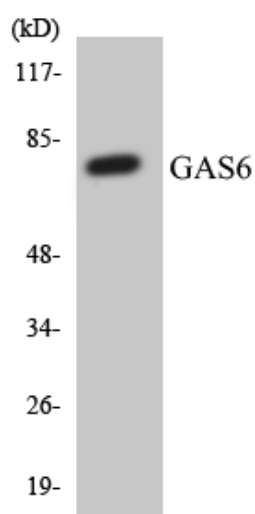
Western Blot analysis of 293 cells using Gas6 Polyclonal Antibody diluted at 1:500



Immunohistochemistry analysis of paraffin-embedded human brain tissue, using GAS6 Antibody. The picture on the right is blocked with the synthesized peptide.



Western blot analysis of lysates from 293 cells, using GAS6 Antibody. The lane on the right is blocked with the synthesized peptide.



Western blot analysis of the lysates from HT-29 cells using GAS6 antibody.